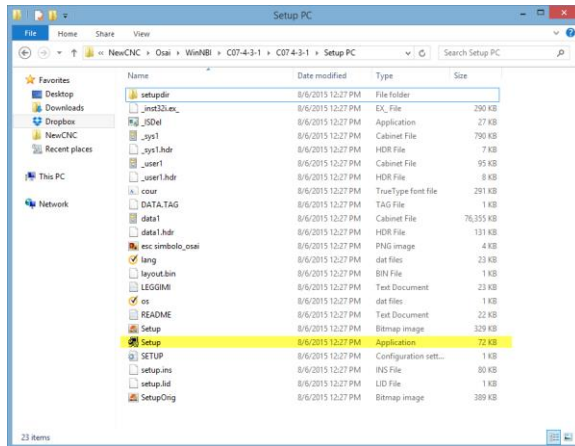
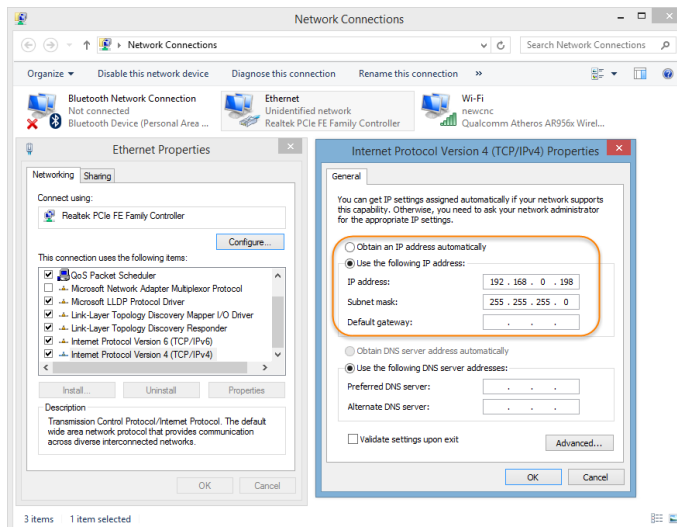


Install WinNBI

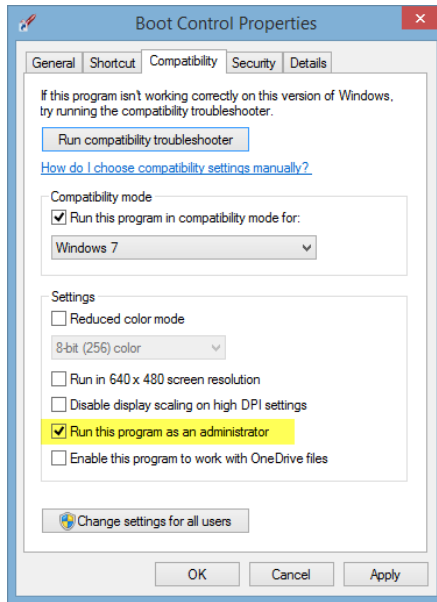
- Install WinNBI from your included flash drive
 - Software - C07-4-3-1 - SetupPC



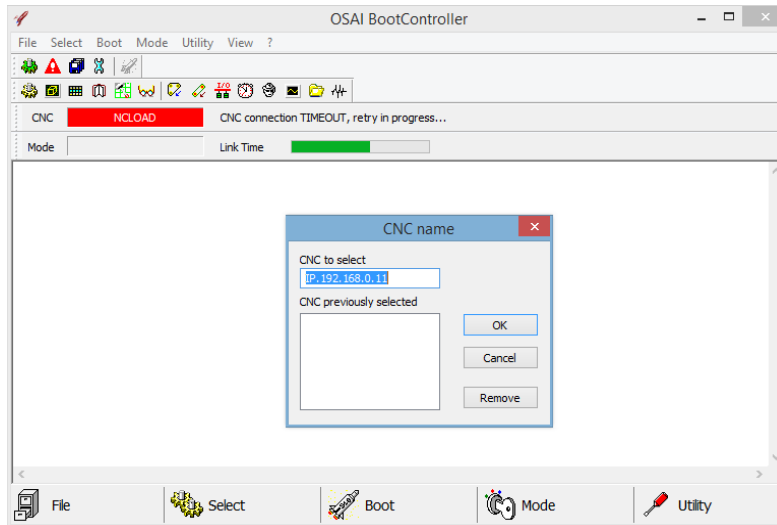
-
- Connect your computer to the control via Ethernet
- Configure Network Settings
 - Control
 - Start – Settings – Network and Dialup Connections
 - View the properties of PCI-RTCENIC1
 - Computer
 - Navigate to your network adapter settings



- Note: Both Machines should be in the same IP group and have identical subnetmasks
- BootControl
 - You should see an icon for BootControl on your desktop
 - Modify the properties to run as administrator



- Open Bootcontroller and click on Select – CNC from the file menu



- Enter the IP address of the control
 - Note: must be preceded by “IP.”
- Your computer should now connect automatically to the control