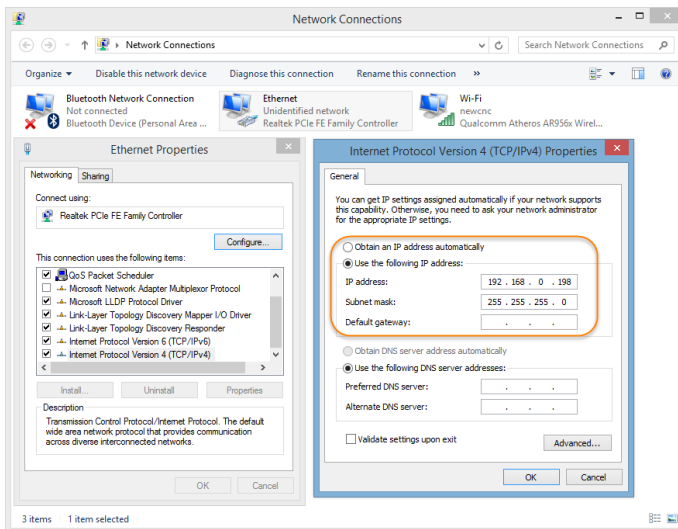


## Network CNC Control

- Connect your computer to the control via Ethernet cable
- Configure Network Settings
  - Control
    - Start – Settings – Network and Dialup Connections
    - Right click to view the properties of PCI-RTCNIC1
    - Specify an IP address
      - IP Address: 192.168.0.199
      - Subnet Mask: 255.255.255.0
  - Computer
    - Navigate to your network adapter settings



- Note: Both Machines should be in the same IP group and have identical subnet masks
- Example:
  - IP Address: 192.168.0.198
  - Subnet Mask: 255.255.255.0
- Open My Computer
- Right click and select “Add a network location”
  - When it prompts you to enter network address enter
    - [\\192.168.0.199\USER\Programs](http://192.168.0.199/USER/Programs) (or whatever IP address is assigned to the CNC)
- After you finish you can now save programs directly to the CNC
  - Note: The CNC must be powered on